

# A PLAT OF - TOWER GOLF COURSE

BEING PLAT NO. 17 OF MARTIN DOWNS, A P.U.D.  
LYING IN SECTIONS 11, 13 & 14 TWP. 38S., RGE. 40E.  
MARTIN COUNTY, FLORIDA

FEBRUARY, 1986

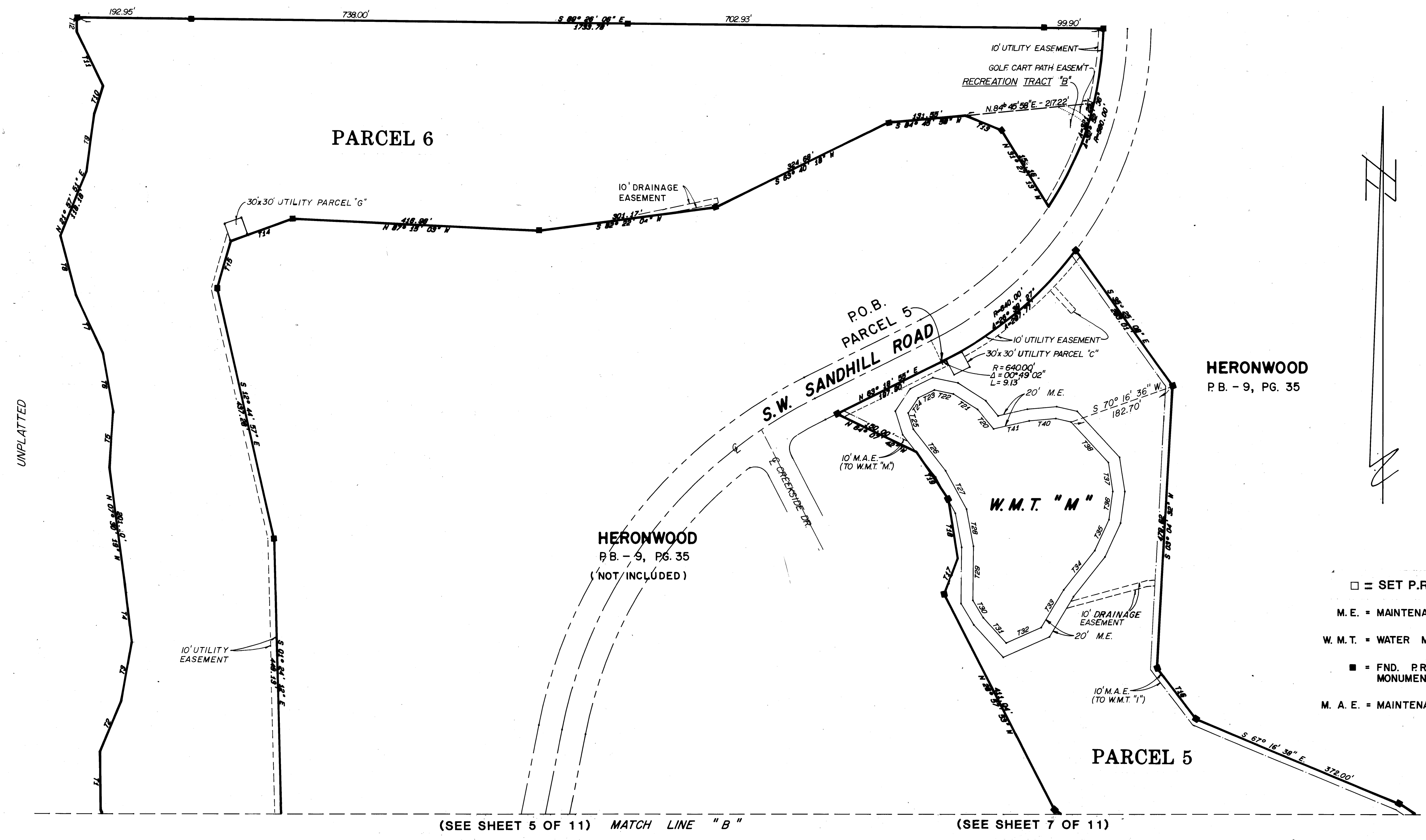
I, LOUISE V. ISAACS,  
CLERK OF THE CIRCUIT  
COURT OF MARTIN COUNTY,  
FLORIDA, HEREBY CERTIFY  
THAT THIS PLAT WAS FILED  
FOR RECORD IN PLAT  
BOOK 10, PAGE 23,  
MARTIN COUNTY, FLORIDA,  
PUBLIC RECORDS, THIS  
DAY OF \_\_\_\_\_,  
A.D., 1986.

LOUISE V. ISAACS, CLERK  
CIRCUIT COURT  
MARTIN COUNTY, FLORIDA.

BY \_\_\_\_\_  
DEPUTY CLERK

FILE NO. \_\_\_\_\_

CRANE CREEK COUNTRY CLUB, PHASE II  
P.B. - 7, PG. 28



- = SET P.R.M.
- M.E. = MAINTENANCE EASEMENT
- W.M.T. = WATER MANAGEMENT TRACT
- = FND. P.R.M. (PERMANENT REFERENCE MONUMENT)
- M.A.E. = MAINTENANCE ACCESS EASEMENT

LINDÄHL, BROWNING, FERRARI & HELLSTROM, INC.  
CONSULTING ENGINEERS, PLANNERS & SURVEYORS

P.O. BOX 727  
JUPITER, FLORIDA 33458

10 Central Parkway  
Suite 430  
Stuart, Florida 33497

117 SOUTH SECOND STREET  
SUITE 202  
FORT PIERCE, FLORIDA 33450